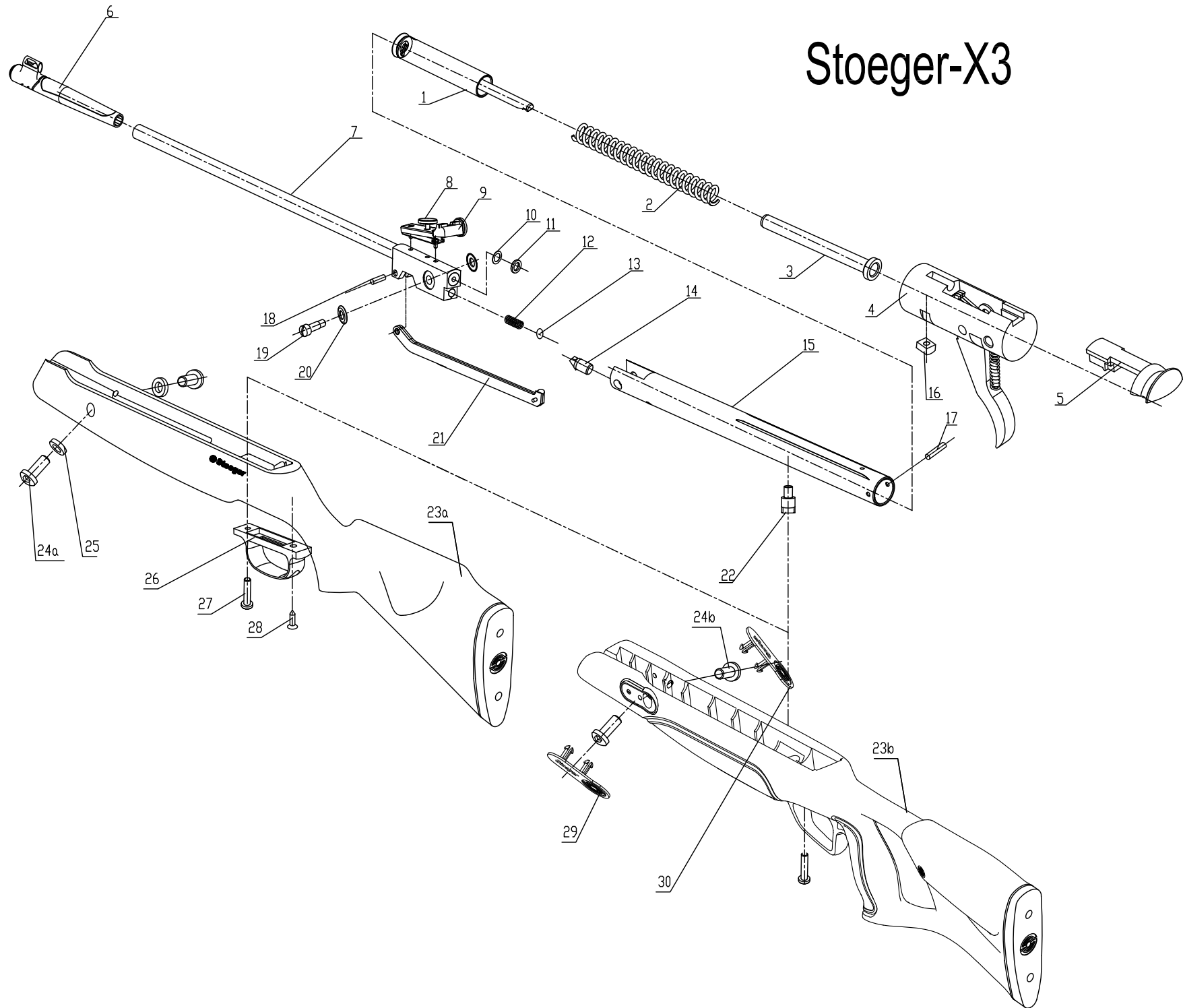


# Stoeger-X3



| No. | Code Name           | Part Name                 | X3  | X3 Synt | Easy-broken parts 2% free |                                      | Revised Date |
|-----|---------------------|---------------------------|-----|---------|---------------------------|--------------------------------------|--------------|
| 1   | 15-04-100C          | Piston Assembly           | 1   | 1       | Y                         |                                      |              |
| 2   | X3-00-1             | Piston Spring             | 1   | 1       | Y                         |                                      |              |
| 3   | B12-00-3            | Spring Guide              | 1   | 1       | Y                         |                                      |              |
| 4   | B12-05-00B          | Trigger Pack Assembly     | 1   | 1       |                           |                                      |              |
| 5   | B12-2-04-00         | Safety Assembly           | 1   | 1       | Y                         |                                      |              |
| 6   | B12-2-00-1A         | Muzzle Break              | 1   | 1       | Y                         |                                      |              |
| 7   | B15-1-01-100        | Barrel Assembly           | 1   | 1       |                           |                                      |              |
| 8   | B12-2-03-300        | elevation adjustent screw | 1   | 1       | Y                         |                                      |              |
| 9   | B12-2-03-00         | Rear Sight Assembly       | 1   | 1       | Y                         |                                      |              |
| 10  | B22-00-1A           | Adjust Washer             | 0-2 | 0-2     |                           |                                      |              |
| 11  | B12-00-14           | Breach Seal               | 1   | 1       | Y                         |                                      |              |
| 12  | B15-01-2A           | Spring                    | 1   | 1       | Y                         |                                      |              |
| 13  | GB/T 308-1989 8     | Steel Balls               | 1   | 1       | Y                         |                                      |              |
| 14  | B12-1-00-2          | Detent                    | 1   | 1       |                           |                                      |              |
| 15  | B15-03-00C          | Tube Assembly             | 1   | 1       |                           |                                      |              |
| 16  | B12-00-15B          | Nuts                      | 1   | 1       | Y                         |                                      |              |
| 17  | B12-1-00-5          | Tube Pin                  | 1   | 1       |                           |                                      |              |
| 18  | B15-00-1            | Lever Pin                 | 1   | 1       |                           |                                      |              |
| 19  | B19-2-00-2A         | Break Bolt                | 1   | 1       | Y                         |                                      |              |
| 20  | B18-00-15B          | Break Washer              | 2   | 2       | Y                         |                                      |              |
| 21  | B15-00-4            | Lever                     | 1   | 1       |                           |                                      |              |
| 22  | B12-00-8            | Stock Bolt                | 1   | 1       |                           |                                      |              |
| 23a | X3-07-00            | Wood Stock Assembled      | 1   |         |                           | Include one Stock pad and two screws |              |
| 23b | X3-08-00            | Synthetic Stock Assembled |     | 1       |                           | Include one Stock pad and two screws |              |
| 24a | GB/T 818-1985 M5x14 | Pan Head Screws - nylok   | 2   |         | Y                         |                                      |              |
| 24b | GB/T 818-1985 M5x12 | Pan Head Screws - nylok   |     | 2       |                           |                                      |              |
| 25  | GB/T 97.1-2002 5    | Plain Washers             | 2   |         |                           |                                      |              |
| 26  | B12-2-00-2A         | Trigger Guard             | 1   |         | Y                         |                                      |              |
| 27  | B12-2-00-3A         | Behind Screw              | 1   | 1       | Y                         |                                      |              |
| 28  | GB/T 847 ST3.5X16   | Screw                     | 1   |         | Y                         |                                      |              |
| 29  | X3-08-3             | Left Cover Plate          |     | 1       | Y                         |                                      |              |
| 30  | X3-08-4             | Right Cover Plate         |     | 1       | Y                         |                                      |              |